

TECHNICAL DATA SHEET

PRODUCT NAME: Supernatant of human chimeric IgM anti-Nucleocapsid clone E2E3

Background: After immunization with Nucleocapsid antigen of InEps® mouse, a transgenic mouse whose sequence for the Ig heavy chain constant region is replaced by a human IgM sequence, a hybridoma cell line has been established.

STORAGE: Between + 2°C and + 8 °C

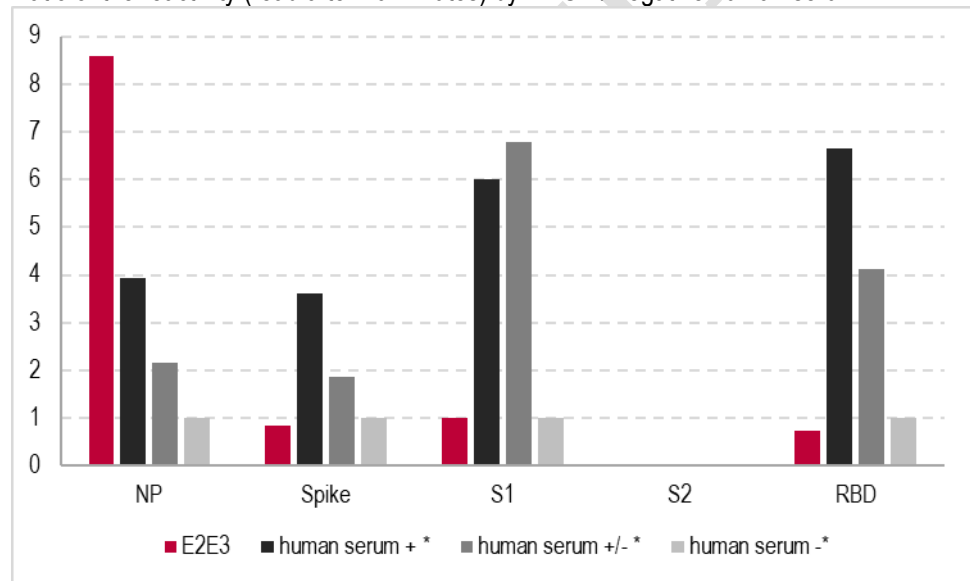
SHELF-LIFE: Two years from manufacturing day

SPECIFICITY: SARS-COV-2 Nucleocapsid

Reactivity tested by ArkAb:

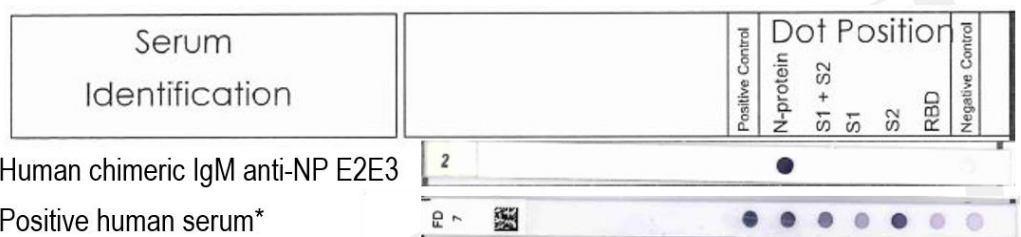
With ArkAb in-house ELISA vs positive human serum*

Ratio of the reactivity (read after 20 minutes) by ELISA / negative human serum*



* Human sera confirmed positive +, medium +/- or negative - by validated assays (Nucleocapsid IgM + Spike IgM)

With d-tek Covidot 5IgG (adapted in IgM) vs positive human serum*



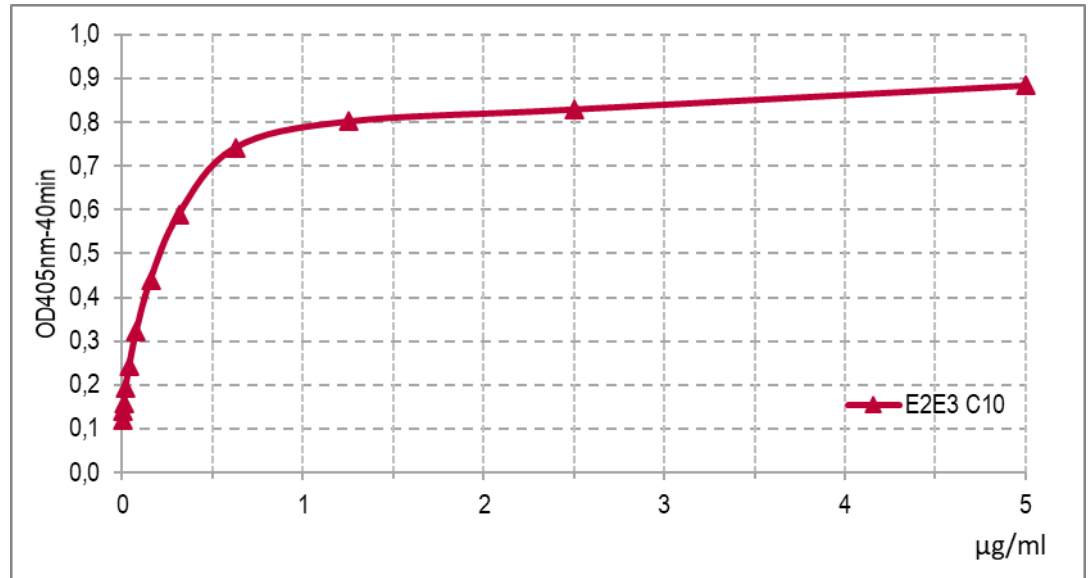
ArkAb

98 rue Charles Le Gendre
87000 LIMOGES
+ 33 (0)5 55 12 30 21
contact@arkab.fr

www.arkab.fr
www.b-cell-design.com

Sensitivity curve:

Reactivity tested by ELISA with Nucleocapsid protein coated at 1 µg/ml or 100 ng/well on immunoassay plates



Reactivity tested by other IVD manufacturers:

Ig	Immunogen	Clone	D-tek Immunoblot Blue diver					
			NP	S (S1+S2)	S1	S2	RBD	Other coronavirus
IgM	Nucleocapsid	E2E3C10	Pos	neg	neg	neg	neg	SARS (Pos)

Ig	Immunogen	Clone	InnoBioChips CoViDiag				
			NP	S1	S2	RBD	NTD
IgM	Nucleocapsid	E2E3C10	Pos	neg	neg	neg	neg

Ig	Immunogen	Clone	CLIA (NP+Spike)
IgM	Nucleocapsid	E2E3C10	Pos

SAFETY STATEMENT: **not infectious - biological product from *in vitro* production**

For research or further manufacturing use only . Not for use in diagnostics procedures.

ArkAb

98 rue Charles Le Gendre
87000 LIMOGES
+ 33 (0)5 55 12 30 21
contact@arkab.fr

www.arkab.fr
www.b-cell-design.com