

TECHNICAL DATA SHEET

PRODUCT NAME: Supernatant of human chimeric IgM anti-Spike clone F16C7

Background: After immunization with Spike antigen of InEps® mouse, a transgenic mouse whose sequence for the Ig heavy chain constant region is replaced by a human IgM sequence, a hybridoma cell line has been established.

STORAGE: Between + 2°C and + 8 °C

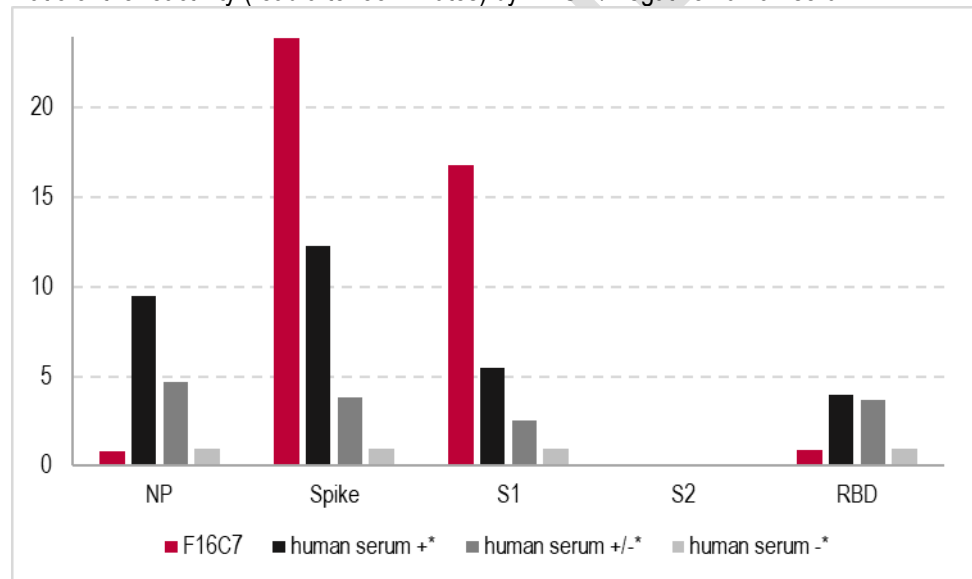
SHELF-LIFE: Two years from manufacturing day

SPECIFICITY: SARS-CoV-2 Spike-1 NTD

Reactivity tested by ArkAb

With ArkAb in-house ELISA vs positive human serum*

Ratio of the reactivity (read after 55 minutes) by ELISA / negative human serum*



* Human sera confirmed positive +, medium +/- or negative - by validated assays (Nucleocapsid IgM + Spike IgM)

With d-tek Covidot 5IgG (adapted in IgM) vs positive human serum*

Serum Identification	Dot Position						
	Positive Control	N-protein	S1 + S2	S1	S2	RBD	Negative Control
Human chimeric IgM anti-Spike F16C7	23	+	+	+	+	+	-
Positive human serum*	7	+	+	+	+	+	-

Human chimeric IgM anti-Spike F16C7

Positive human serum*



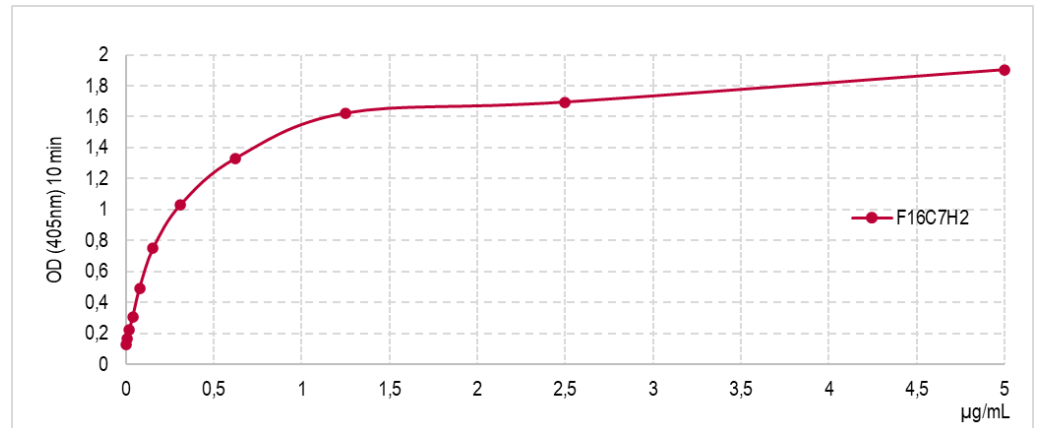
ArkAb

98 rue Charles Le Gendre
87000 LIMOGES
+ 33 (0)5 55 12 30 21
contact@arkab.fr

www.arkab.fr
www.b-cell-design.com

Sensitivity curve:

Reactivity tested by ELISA with Spike coated at 1 µg/ml or 100 ng/well on immunoassay plates



Reactivity tested by other IVD manufacturers

Ig	Immunogen	Clone	Bead based fluorescent multiplex test					D-tek Immunoblot Blue diver					
			NP	SPIKE	S1	S2	RBD	NP	S (S1+S2)	S1	S2	RBD	Other coronavirus
IgM	Spike	F16C7	neg	Pos	Pos	ND	neg	neg	Pos	Pos	neg	neg	neg

ND = Not Determined

Ig	Immunogen	Clone	InnoBioChips CoViDiag				
			NP	S1	S2	RBD	NTD
IgM	Spike	F16C7H2	neg	Pos	neg	neg	Pos

SAFETY STATEMENT: **not infectious - biological product from *in vitro* production**

For research or further manufacturing use only . Not for use in diagnostics procedures.

ArkAb

98 rue Charles Le Gendre
87000 LIMOGES
+ 33 (0)5 55 12 30 21
contact@arkab.fr

www.arkab.fr
www.b-cell-design.com